

SERVICE**Whirlpool Europe
Customer Services****800 279 63**

for
IKEA
from
Whirlpool

Service Manual

Mikrowellengerät

800 279 63

MBI 307 S

Modell	800 279 63	
Version	8538 432 01671	Seite
	Sicherheitsvorschrift	2
	Technische Daten	3
	Ersatzteilliste	4
	Explosionszeichnung	5
	Anschlußplan	6 - 7
	Schließschema	8 - 9

Sicherheitsvorschrift

INTRODUCTION

Before leaving the factory each oven is carefully checked.
It must, however, be installed and used correctly.

Despite all the steps taken to make the oven safe, the safety is dependent on the correct installation and the fact the user understands how to use and maintain the oven.

The information in this section should be used as a reminder that the oven is safe and that anyone who uses it must first read the instructions for use in order to be able to use the oven correctly and obtain best results.

SAFETY

To avoid injury to yourself and damage to the appliance always work to the following rules when servicing an oven.

Always disconnect the plug from the mains before starting work.

If there is no plug switch off the electric supply at the control box.

When you have finished servicing an oven before you reconnect it to the mains, make sure that:

- all the internal connections are correct
- the wires are insulated and not touching the door or the cabinet or anything sharp
- all the earth connections are electrically and mechanically sound
- do not modify or anyway interfere with the safety devices built-in to the oven

- make sure that each replacement part you use conforms to the manufacturer's specifications

Do not start a repair if you have any doubt as to your ability to complete it.

CAUTION - MICROWAVE RADIATION

PERSONNEL SHOULD NOT BE EXPOSED TO THE MICROWAVE ENERGY WHICH MAY RADIATE FROM THE MAGNETRON, WAVEGUIDE OR ANTENNA IF THEY ARE IMPROPERLY USED OR CONNECTED. ALL INPUT AND OUTPUT MICROWAVE CONNECTIONS, WAVEGUIDES, FLANGES AND GASKETS MUST BE SECURE. NEVER OPERATE THE DEVICE WITHOUT A MICROWAVE ENERGY ABSORBING LOAD ATTACHED. NEVER LOOK INTO AN OPEN WAVEGUIDE OR ANTENNA WHILE THE DEVICE IS ENERGIZED. NEVER OPERATE AN OVEN WITH CABINET OFF WITHOUT MEASURING THE MICROWAVE LEAKAGE AROUND MAGNETRON AND VISIBLE MICROWAVE CONNECTIONS (WELDING JOINTS).

Do not operate the oven if the following conditions exist:

- the door does not close firmly against the door support because of the door being warped or the hinges damaged.
- The door trims or seals are damaged.
- If there is any visible damage to the oven.
- if the door does not close properly.

Avoid operating the oven if known components in the interlock system, oven door or microwave generating assembly are known defective. They must be replaced.

WARNING - HIGH VOLTAGE

IT IS POSSIBLE TO COME IN CONTACT WITH LETHAL HIGH VOLTAGE WHEN WORKING WITH HV TRANSFORMER, HV CAPACITOR AND MAGNETRON. THEREFORE NEVER TRY TO MEASURE THE HIGH VOLTAGE. ALWAYS TAKE UTMOST CARE WHEN PERFORMING ELECTRIC MEASUREMENTS INSIDE THE OVEN.

Technische Daten**Dimensions of cabinet**

Height	277	mm
Width	525	mm
Depth	328	mm

Dimensions of cavity

Height	210	mm
Width	335	mm
Depth	290	mm
Cavity volume	20	l
Turntable	280	mm

Weight

Gross	16.5	kg
Net	15	kg

Electrical

Voltage	230/240	V
Frequency	50	Hz

Power

Total consumption	1500	W
Output power Microwave	900	W
Microwave frequency	2450	MHz

Built-in kit

AVM 125 (optional)

Features

- Electronic controls
- Jet start
- Auto weight defrost
- Timer
- Timed defrost
- Child lock
- 7 power levels
- 24 hour clock
- 90 minute timer

Technische Daten**Dimensions of cabinet**

Height	277	mm
Width	525	mm
Depth	328	mm

Dimensions of cavity

Height	210	mm
Width	335	mm
Depth	290	mm
Cavity volume	20	l
Turntable	280	mm

Weight

Gross	16.5	kg
Net	15	kg

Electrical

Voltage	230/240	V
Frequency	50	Hz

Power

Total consumption	1500	W
Output power Microwave	900	W
Microwave frequency	2450	MHz

Built-in kit

AVM 125 (optional)

Features

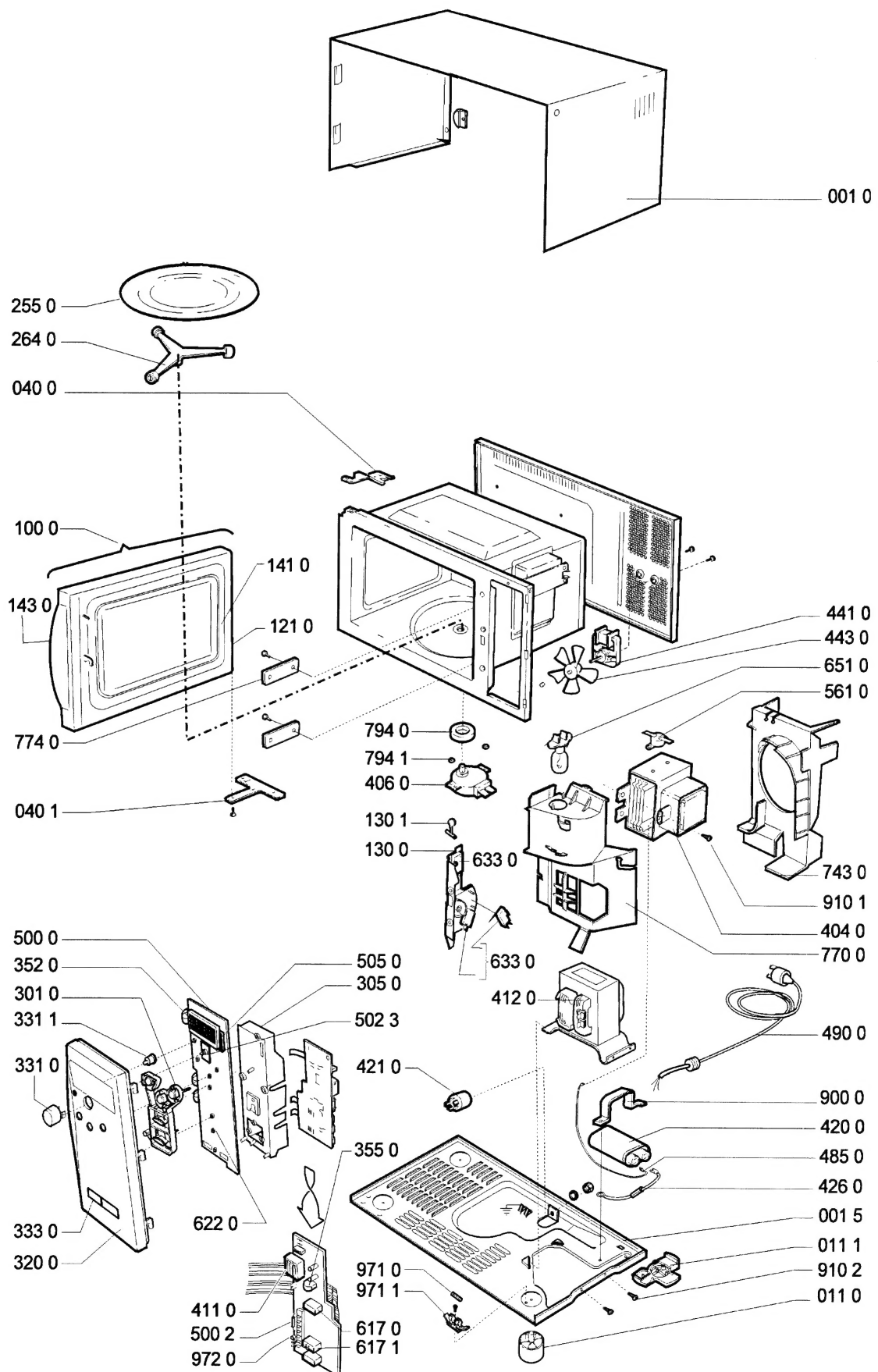
- Electronic controls
- Jet start
- Auto weight defrost
- Timer
- Timed defrost
- Child lock
- 7 power levels
- 24 hour clock
- 90 minute timer

Ersatzteilliste

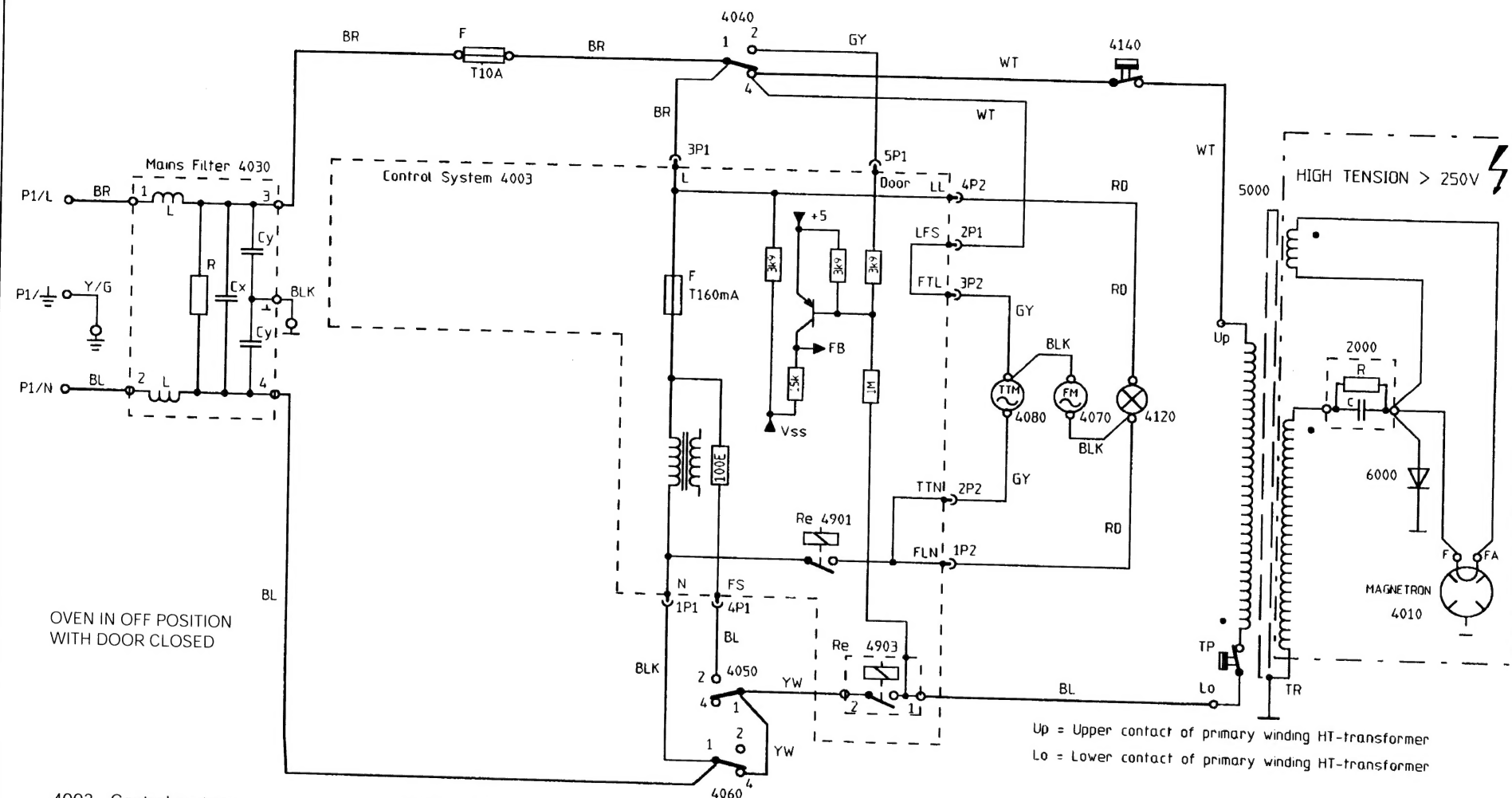
Model 800 279 63
Service No. 853843201671
Version 853843201671

Pos. Nr.	12NC Code	Beschreibung
001 0	4812 440 58239	Gehaeuse Silber
001 5	4819 462 79937	Platte Boden
011 0	4819 462 79423	Fuss
011 1	4819 462 79938	Fuss rechts hinten
040 0	4819 417 19514	Scharnier,oben
040 1	4819 417 19248	Scharnier,unten
100 0	4812 442 69075	Tuer kpl. Silber
121 0	4819 459 48654	Tuerrahmen innen
130 0	4819 271 38148	Schaltereinheit
130 1	4819 404 78492	Hebel fuer Mikroschalter
141 0	4819 450 58095	Tuerscheibe
143 0	4812 459 48101	Tuerrahmen aussen Silber
255 0	4819 466 78218	Drehteller Glas
264 0	4819 535 78156	Lagerkreuz
301 0	4812 404 78287	Blende
305 0	4819 404 79461	Halter
320 0	4812 453 19868	Schalterblende
320 0	4812 453 59273	Schalterblende Silber
331 0	4819 412 58621	Knopf Timer SW
331 1	4819 410 29098	Taste Clock-Set SW
333 0	4812 410 28618	Taste assy
352 0	4819 130 38083	Display
355 0	4819 280 18029	Summer
404 0	4819 131 58019	Magnetron
406 0	4812 361 18262	Motor Turntable
411 0	4819 148 68085	Transformator
412 0	4812 145 38026	Transformator HS
420 0	4819 121 38013	HS-Kondensator 1,15 μ F 2100V
421 0	4819 121 18197	Filter Netz
426 0	4819 218 38038	Diode HS
441 0	4819 361 18313	Motor Luefter
443 0	4819 310 39025	Luefterrad Ven.
485 0	4819 320 28037	Hochsp.Kabel
490 0	4819 321 18136	Netzkabel 2m SA
500 0	4819 214 78706	Kontrolleinheit
500 2	4819 113 88001	Widerstand 100 Ohm
502 3	4819 101 48142	Potentiometer
505 0	4819 209 88071	Microprocessor
561 0	4819 282 48281	Thermostat Magnetron 125 °C
617 0	4819 280 68323	Relais 24V
617 1	4819 280 68321	Relais
622 0	4819 276 18273	Schalter VKS
633 0	4819 271 38145	Mikroschalter
651 0	4812 134 18013	Lampe
743 0	4819 462 38841	Luftfuehrung Luefter
770 0	4819 462 38839	Luftfuehrung Magnetron
774 0	4819 462 79939	Abdeckung Micaplatte
794 0	4819 532 68686	Dichtung Ring fuer TT
794 1	4812 532 68092	Ring
900 0	4819 404 79272	Halter fuer Kondensator
910 1	4819 502 18499	Schraube
910 2	4819 502 38274	Schraube fuer HS Trafo M4x16St
971 0	4819 252 28125	Sicherung T10A
971 1	4819 256 38016	Halterung fuer Sicherung
972 0	4819 252 28132	Sicherung T160mA

Explosionszeichnung



Anschlußplan

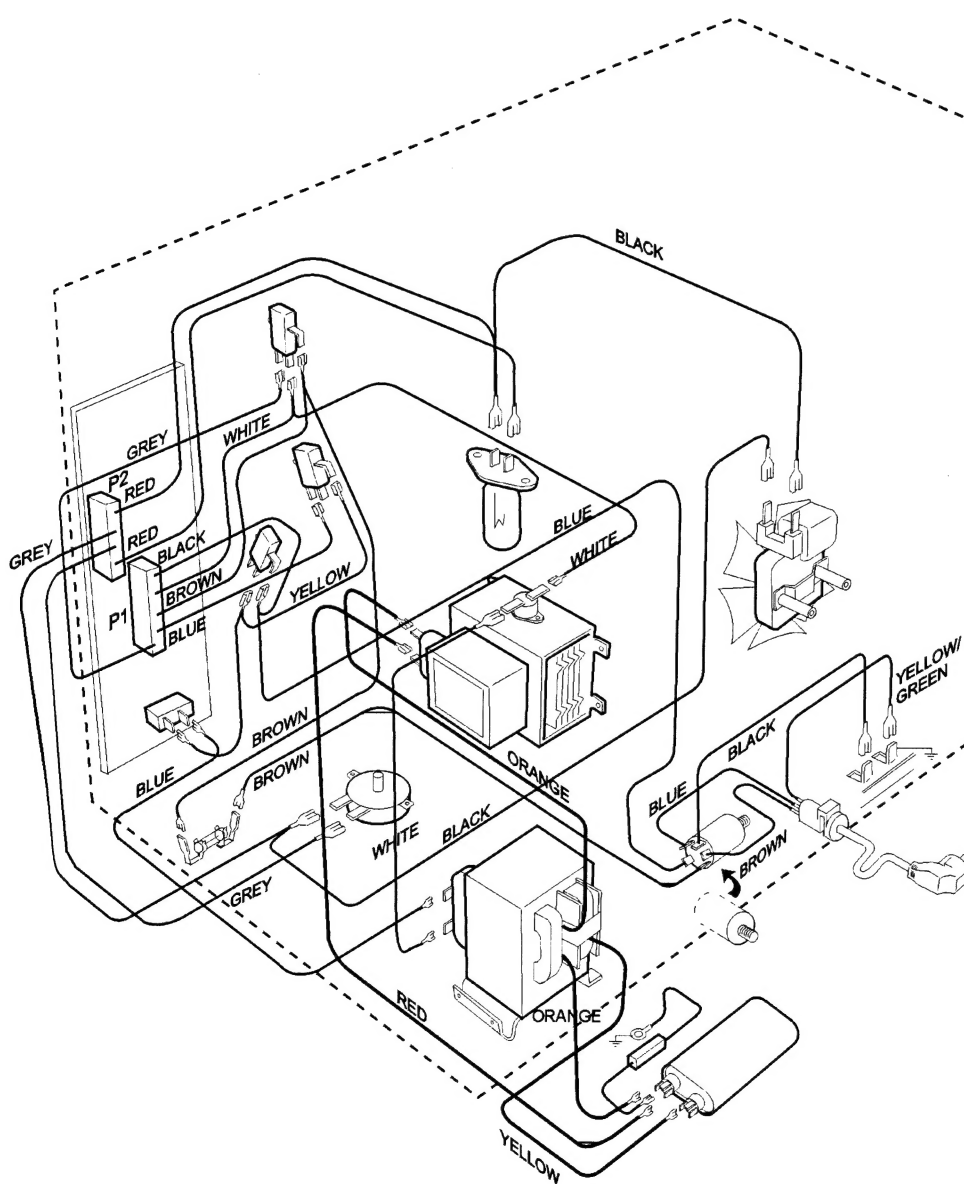


- 4003 Control system
- 4010 Magnetron
- 4030 Mainsfilter
- 4040 Secondary doorswitch
- 4050 Monitor doorswitch
- 4060 Primary doorswitch

- 4070 Motor fan
- 4080 Motor turntable
- 4120 Oven lamp
- 4140 Thermostat magnetron
- 2000 HT capacitor
- 5000 HT transformer
- 6000 HT diode

- BL Blue
- BLK Black
- BR Brown
- GY Grey
- RD Red
- WT White
- YW Yellow
- Y/G Yellow-Green

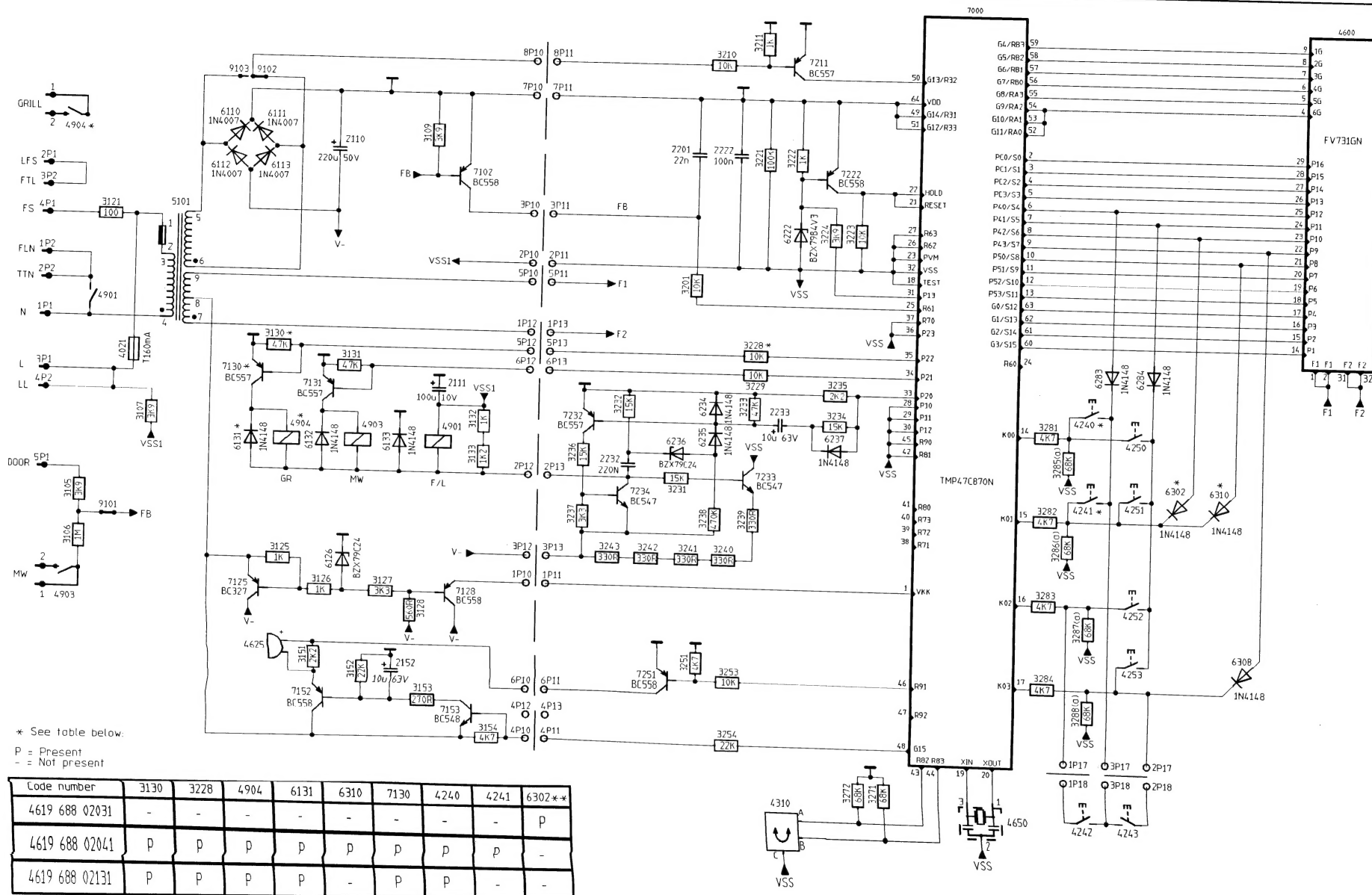
Anschlußplan



m404

80000263

Schießschema



4619 688 02041

Schließschema

* See table below:

P = Present

- = Not present

Code Number	3130	3228	4904	6131	6310	7130	4240	4241	9109	**
4619 688 02031	-	-	-	-	-	-	-	-	-	P
4619 688 02041	P	P	P	P	P	P	P	P	P	-
4619 688 02131	P	P	P	P	-	P	P	-	P	-

** Must not be present in mask 1, 4619 678 44331.

Flat cable connections:

P10 - P11

P12 - P13

(a) REMARKS:

Items 3285, 3286, 3287 and 3288 are mounted only when OTP is used.

4619 688 02041

