

MUSICA

MANUSCRITTI

Magl.

XIX

116





This page was intentionally left blank

*

Pagina lasciata intenzionalmente vuota

SEZIONE MADRABICHIANA



Magi

Class.

XIX

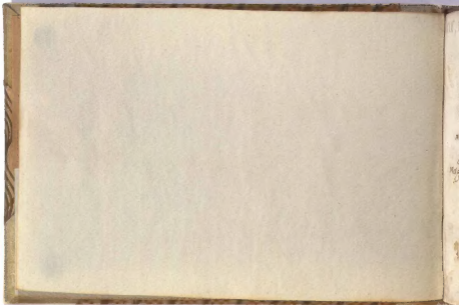
Volume

116

Provenienza

M. d. Palat.

Cl. XIX. 116



XIX, 116

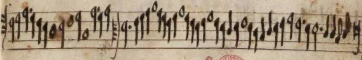
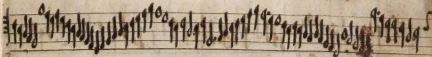
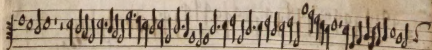
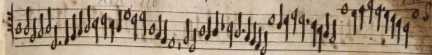
B 116.

XIX
B R R R R R

Ant

no
m R
Co
mag s. rator
R
no
R
m
mag s.
R
R
R

Cap^{mo} R^{mo} Cáo
R^{mo} Cap^{mo} R^{mo} ma
R^{mo} Cap^{mo} R^{mo}
R^{mo} R^{mo} R^{mo} Cap^{mo} R^{mo} mon.
R^{mo} R^{mo} R^{mo} Cap^{mo} R^{mo} ma
Pa bene Pa da Pa Ha R^{mo} ma
R^{mo} Pa R^{mo} Pa bene
R^{mo} R^{mo} R^{mo} R^{mo} R^{mo}
R^{mo} R^{mo} R^{mo} R^{mo} R^{mo}
R^{mo} R^{mo} R^{mo} R^{mo} R^{mo}



Handwritten musical notation on a five-line staff, featuring various note values and rests.

Handwritten musical notation on a five-line staff, featuring various note values and rests.

Handwritten musical notation on a five-line staff, featuring various note values and rests.

Handwritten musical notation on a five-line staff, featuring various note values and rests.

3.

Handwritten musical notation on a five-line staff, featuring various note values and rests.

Handwritten musical notation on a five-line staff, featuring various note values and rests.

Handwritten musical notation on a five-line staff, featuring various note values and rests.

Handwritten musical notation on a five-line staff, ending with a double bar line.

Handwritten musical notation on a five-line staff, featuring a treble clef and a common time signature. The notation consists of a series of rhythmic notes and rests, with a small '4' written above the staff near the end.

Handwritten musical notation on a five-line staff, continuing the piece with rhythmic notes and rests.

Handwritten musical notation on a five-line staff, concluding the piece with a double bar line and a final note.

Four empty musical staves, likely intended for a second system or as a continuation of the piece.

Handwritten musical notation on a five-line staff. The notation consists of rhythmic symbols, including vertical stems with flags and various note heads (circles and ovals). A treble clef is visible on the left, and a sharp sign (H) is present. The piece concludes with a double bar line and a fermata-like symbol.

Handwritten musical notation on a five-line staff. The notation features rhythmic symbols such as stems with flags and note heads. A treble clef is on the left, and the staff ends with a double bar line and a fermata-like symbol.

Handwritten musical notation on a five-line staff. The notation includes rhythmic symbols like stems with flags and note heads. A treble clef is on the left, and the staff ends with a double bar line and a fermata-like symbol.

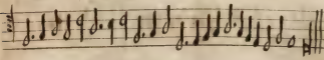
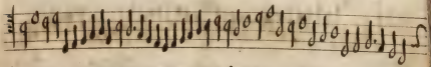
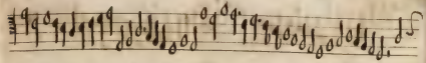
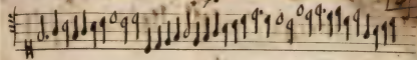
Handwritten musical notation on a five-line staff. The notation consists of rhythmic symbols, including stems with flags and note heads. A treble clef is on the left, and the piece ends with a double bar line and a fermata-like symbol.

Handwritten musical notation on a five-line staff. The notation includes a treble clef, a common time signature (C), and various rhythmic values such as eighth and sixteenth notes. A fermata is placed over a note in the middle of the staff. Above the staff, there are some faint markings, possibly "6" and "5".

Handwritten musical notation on a five-line staff, continuing the piece. It features a treble clef and a common time signature. The notation consists of a series of rhythmic patterns, including eighth and sixteenth notes, with some rests.

Handwritten musical notation on a five-line staff, concluding the piece. It features a treble clef and a common time signature. The notation includes a series of rhythmic patterns, ending with a double bar line and repeat dots.

Four empty musical staves at the bottom of the page, showing the five-line structure without any notation.



Handwritten musical notation on a five-line staff. It begins with a treble clef and a key signature of one sharp (F#). The notation consists of a series of rhythmic figures, including quarter and eighth notes, with some notes beamed together. A fermata is placed over the final note of the staff.

Handwritten musical notation on a five-line staff. It begins with a treble clef and a key signature of one sharp (F#). The notation consists of a series of rhythmic figures, including quarter and eighth notes, with some notes beamed together. A fermata is placed over the final note of the staff.

Handwritten musical notation on a five-line staff. It begins with a treble clef and a key signature of one sharp (F#). The notation consists of a series of rhythmic figures, including quarter and eighth notes, with some notes beamed together. A fermata is placed over the final note of the staff.

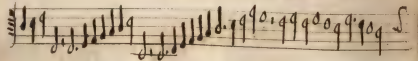
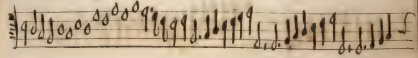
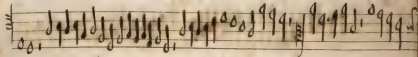
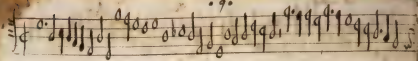
Handwritten musical notation on a five-line staff. It begins with a treble clef and a key signature of one sharp (F#). The notation consists of a series of rhythmic figures, including quarter and eighth notes, with some notes beamed together. A fermata is placed over the final note of the staff.

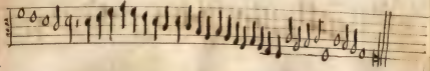
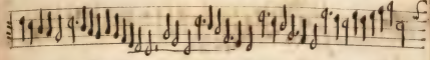
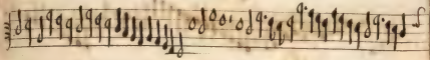
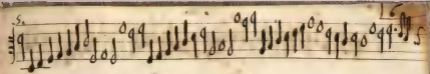
Handwritten musical notation on a five-line staff. The notation consists of various note heads and stems, some with flags, and rests. A treble clef is visible on the left. The music concludes with a double bar line and a fermata-like flourish.

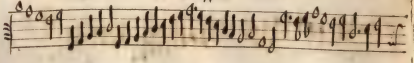
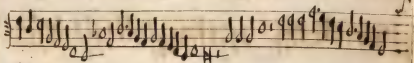
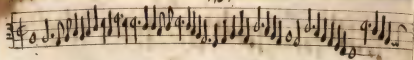
Handwritten musical notation on a five-line staff. The notation consists of various note heads and stems, some with flags, and rests. A treble clef is visible on the left. The music concludes with a double bar line and a flourish.

Handwritten musical notation on a five-line staff. The notation consists of various note heads and stems, some with flags, and rests. A treble clef is visible on the left. The music concludes with a double bar line.

Four empty musical staves, each consisting of five horizontal lines, located at the bottom of the page.





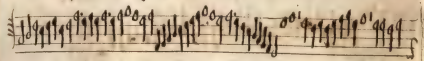
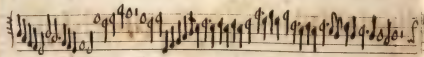
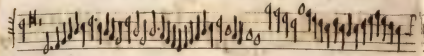
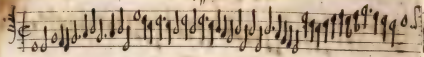


Handwritten musical notation on a five-line staff, featuring various note values and rests.

Handwritten musical notation on a five-line staff, featuring various note values and rests.

Handwritten musical notation on a five-line staff, featuring various note values and rests.

Handwritten musical notation on a five-line staff, featuring various note values and rests, ending with a double bar line.



Handwritten musical notation on a five-line staff, featuring various note values and rests.

Handwritten musical notation on a five-line staff, featuring various note values and rests.

Handwritten musical notation on a five-line staff, featuring various note values and rests.

Handwritten musical notation on a five-line staff, ending with a double bar line and repeat dots.

Handwritten musical notation on a five-line staff, featuring a treble clef and a key signature of one sharp (F#). The notation includes various rhythmic values such as eighth and sixteenth notes, along with rests and a fermata over a note.

Handwritten musical notation on a five-line staff, featuring a treble clef and a key signature of one sharp (F#). The notation includes various rhythmic values such as eighth and sixteenth notes, along with rests and a fermata over a note.

Handwritten musical notation on a five-line staff, featuring a treble clef and a key signature of one sharp (F#). The notation includes various rhythmic values such as eighth and sixteenth notes, along with rests and a fermata over a note.

Handwritten musical notation on a five-line staff, featuring a treble clef and a key signature of one sharp (F#). The notation includes various rhythmic values such as eighth and sixteenth notes, along with rests and a fermata over a note.

Handwritten musical notation on a five-line staff, featuring various note values and rests.

Handwritten musical notation on a five-line staff, featuring various note values and rests.

Handwritten musical notation on a five-line staff, featuring various note values and rests.

Handwritten musical notation on a five-line staff, featuring various note values and rests.

Handwritten musical notation on a five-line staff. It begins with a treble clef and a common time signature (C). The notation consists of a series of rhythmic symbols, including vertical stems and horizontal lines, representing notes and rests. A small number '13' is written above the first group of notes. The staff ends with a fermata-like symbol.

Handwritten musical notation on a five-line staff. It begins with a treble clef. The notation consists of rhythmic symbols, including vertical stems and horizontal lines, representing notes and rests. The staff ends with a fermata-like symbol.

Handwritten musical notation on a five-line staff. It begins with a treble clef. The notation consists of rhythmic symbols, including vertical stems and horizontal lines, representing notes and rests. The staff ends with a fermata-like symbol.

Handwritten musical notation on a five-line staff. It begins with a treble clef. The notation consists of rhythmic symbols, including vertical stems and horizontal lines, representing notes and rests. The staff ends with a fermata-like symbol.

Handwritten musical notation on a five-line staff, featuring various note values and stems.

Handwritten musical notation on a five-line staff, including notes with stems and some larger note heads.

Handwritten musical notation on a five-line staff, showing a sequence of notes with stems and some accidentals.

Handwritten musical notation on a five-line staff, appearing to be a shorter piece or a specific section of the score.

A handwritten musical score consisting of four staves. The notation is dense and appears to be a form of early printed or manuscript notation, possibly for a keyboard instrument. The first staff begins with a clef and a time signature. The notation includes various note values, rests, and bar lines. The paper is aged and shows some staining.

Handwritten musical notation on a five-line staff, featuring various note values and rests.

Handwritten musical notation on a five-line staff, featuring various note values and rests.

Handwritten musical notation on a five-line staff, ending with a double bar line.

Four empty musical staves on the page.

Handwritten musical notation on a five-line staff. It begins with a treble clef and a common time signature (C). The notation consists of various note values, including quarter and eighth notes, with some notes beamed together. A small number '15' is written above the staff near the beginning.

Handwritten musical notation on a five-line staff, continuing the piece. It features a series of eighth notes, some with stems pointing downwards, and includes a few quarter notes.

Handwritten musical notation on a five-line staff, continuing the piece. This section includes several groups of beamed eighth notes and some quarter notes.

Handwritten musical notation on a five-line staff, continuing the piece. It features a mix of eighth and quarter notes, with some notes beamed together. The notation ends with a double bar line.

Handwritten musical notation on a five-line staff. The notation consists of a series of rhythmic symbols, including vertical stems, flags, and dots, arranged in a sequence. A small number '11' is written in the upper right corner of the staff.

Handwritten musical notation on a five-line staff, continuing the sequence of rhythmic symbols from the first staff.

Handwritten musical notation on a five-line staff, continuing the sequence of rhythmic symbols from the first staff.

Handwritten musical notation on a five-line staff, showing a sequence of rhythmic symbols that ends with a double bar line.

Handwritten musical notation on a five-line staff. The notation consists of various rhythmic symbols, including vertical stems with flags and horizontal lines, typical of early manuscript notation. A small number '16.' is written above the staff near the beginning.

Handwritten musical notation on a five-line staff, continuing the sequence from the first staff. It features similar rhythmic symbols and a few larger, more complex symbols.

Handwritten musical notation on a five-line staff, continuing the sequence. The notation includes several groups of vertical stems with flags, suggesting a specific rhythmic pattern.

Handwritten musical notation on a five-line staff, continuing the sequence. This staff shows a more complex and dense arrangement of rhythmic symbols, including many vertical stems with flags.

Handwritten musical notation on a five-line staff, featuring various note values and rests.

Handwritten musical notation on a five-line staff, featuring various note values and rests.

Handwritten musical notation on a five-line staff, featuring various note values and rests.

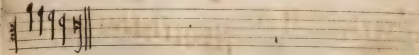
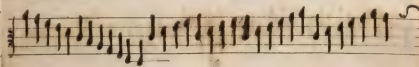
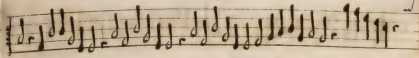
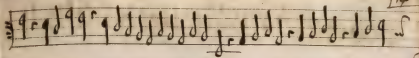
Handwritten musical notation on a five-line staff, featuring various note values and rests.

Handwritten musical notation on a five-line staff. The notation consists of rhythmic symbols, including vertical stems with flags and various note heads, arranged in a sequence. A small number '17' is written above the second measure. The staff begins with a clef and a time signature.

Handwritten musical notation on a five-line staff, continuing the sequence from the first staff. It features rhythmic symbols and note heads, with a small number '17' visible above the second measure.

Handwritten musical notation on a five-line staff, continuing the sequence. The notation includes rhythmic symbols and note heads, with a small number '17' visible above the second measure.

Handwritten musical notation on a five-line staff, continuing the sequence. The notation includes rhythmic symbols and note heads, with a small number '17' visible above the second measure.



Handwritten musical notation on a five-line staff, starting with a treble clef and a common time signature. The notes are mostly quarter and eighth notes.

Handwritten musical notation on a five-line staff, continuing the piece with various note values and rests.

Handwritten musical notation on a five-line staff, featuring a mix of note values and bar lines.

Handwritten musical notation on a five-line staff, concluding the page with a final note and a fermata.

Handwritten musical notation on a five-line staff, featuring a treble clef and a key signature of one flat. The notation includes a series of quarter notes, some beamed together, and rests.

Handwritten musical notation on a five-line staff, featuring a bass clef and a key signature of one flat. The notation includes a series of quarter notes, some beamed together, and rests.

Handwritten musical notation on a five-line staff, featuring a treble clef and a key signature of one flat. The notation includes a series of quarter notes, some beamed together, and rests, ending with a double bar line.

Two empty five-line musical staves.

Handwritten musical notation on a five-line staff, featuring various note values and rests. A small number "19" is written above the staff.

Handwritten musical notation on a five-line staff, featuring various note values and rests.

Handwritten musical notation on a five-line staff, featuring various note values and rests.

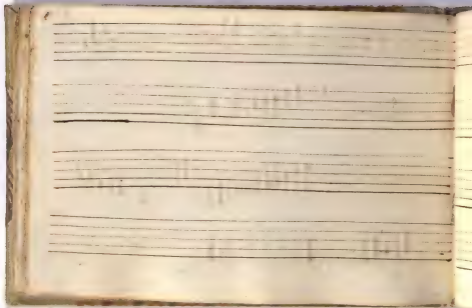
Handwritten musical notation on a five-line staff, featuring various note values and rests.

Handwritten musical notation on a five-line staff, featuring various note values and rests.

Handwritten musical notation on a five-line staff, featuring various note values and rests.

Handwritten musical notation on a five-line staff, featuring various note values and rests.

Handwritten musical notation on a five-line staff, featuring various note values and rests.

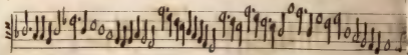
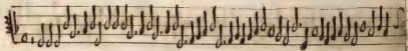
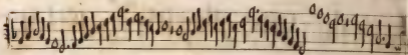
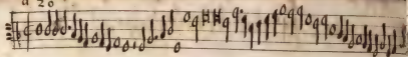


19
Handwritten musical notation on a five-line staff, featuring various note values and rests.

Handwritten musical notation on a five-line staff, featuring various note values and rests.

Handwritten musical notation on a five-line staff, featuring various note values and rests.

Handwritten musical notation on a five-line staff, featuring various note values and rests.



Handwritten musical score on aged paper, consisting of four staves of music. The notation is a form of early musical shorthand, possibly a type of tablature or shorthand notation, using various symbols, dots, and lines on the staves. The paper shows signs of age, including discoloration and a circular stamp or seal in the lower-left corner. The music is written in black ink.

Handwritten musical notation on a five-line staff, featuring various note values and rests.

Handwritten musical notation on a five-line staff, featuring various note values and rests.

Handwritten musical notation on a five-line staff, featuring various note values and rests.

Handwritten musical notation on a five-line staff, featuring various note values and rests.



Handwritten text on the first staff, appearing as a series of illegible characters.

Handwritten text on the second staff, appearing as a series of illegible characters.

Handwritten text on the third staff, appearing as a series of illegible characters.

Handwritten text on the fourth staff, appearing as a series of illegible characters.

1. The first part of the book is devoted to a general introduction to the subject of the history of the world.

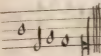
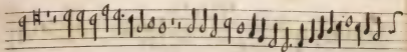
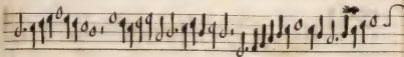
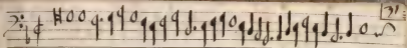
2. The second part of the book is devoted to a general introduction to the subject of the history of the world.

3. The third part of the book is devoted to a general introduction to the subject of the history of the world.

4. The fourth part of the book is devoted to a general introduction to the subject of the history of the world.

Handwritten musical notation on four staves. The notation consists of rhythmic patterns and notes, likely representing a drum pattern (Rullo). The first staff begins with a treble clef and a common time signature. The notation is dense and rhythmic, with many notes and rests. The second staff continues the pattern. The third staff includes a sharp sign (♯) below the staff. The fourth staff ends with a double bar line and a sharp sign (♯) below the staff.

Partial view of handwritten musical notation on the adjacent page, showing the right edge of the manuscript with some notes and clefs visible.



Handwritten musical notation on a five-line staff, featuring a treble clef and a common time signature. The notation consists of a series of notes and rests, including a large initial note on the first line.

Handwritten musical notation on a five-line staff, continuing the piece with various note values and rests.

Handwritten musical notation on a five-line staff, showing a continuation of the musical sequence.

Handwritten musical notation on a five-line staff, concluding the visible portion of the piece with a final note and a fermata.

Handwritten musical notation on a five-line staff, featuring various note values and rests.

Handwritten musical notation on a five-line staff, featuring various note values and rests.

Handwritten musical notation on a five-line staff, featuring various note values and rests, ending with a double bar line.

Empty musical staves on the page.

Handwritten musical notation on a five-line staff, featuring various note values and rests.

Handwritten musical notation on a five-line staff, featuring various note values and rests.

Handwritten musical notation on a five-line staff, featuring various note values and rests.

Handwritten musical notation on a five-line staff, featuring various note values and rests.

Handwritten musical notation on a five-line staff, starting with a treble clef and a common time signature. The notation consists of various note values and rests.

Handwritten musical notation on a five-line staff, continuing the piece with various note values and rests.

Handwritten musical notation on a five-line staff, concluding with a double bar line and repeat dots.

Four empty musical staves at the bottom of the page.

Handwritten musical notation on a five-line staff, featuring various note values and rests.

Handwritten musical notation on a five-line staff, featuring various note values and rests.

Handwritten musical notation on a five-line staff, featuring various note values and rests.

Handwritten musical notation on a five-line staff, featuring various note values and rests.

Handwritten musical notation on a five-line staff, featuring various note values and rests.

Handwritten musical notation on a five-line staff, featuring various note values and rests.

Handwritten musical notation on a five-line staff, featuring various note values and rests.

Handwritten musical notation on a five-line staff, ending with a double bar line and repeat dots.

Handwritten musical notation on a five-line staff. The notation consists of various rhythmic symbols, including vertical stems with flags, horizontal lines, and curved marks, typical of early manuscript notation. A clef is visible at the beginning of the staff.

Handwritten musical notation on a five-line staff, continuing the piece. It features similar rhythmic symbols to the first line, with some horizontal lines and curved marks. A clef is visible at the beginning of the staff.

Handwritten musical notation on a five-line staff. This line includes a sharp sign (#) above a note, indicating a key signature change. The notation continues with various rhythmic symbols. A clef is visible at the beginning of the staff.

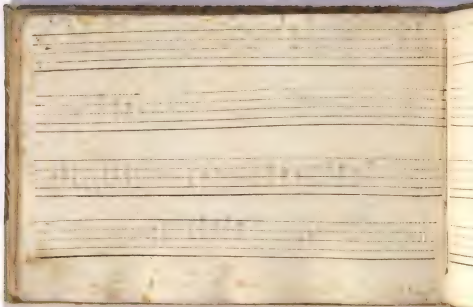
Handwritten musical notation on a five-line staff, concluding the piece. It features various rhythmic symbols and a clef at the beginning of the staff.

Handwritten musical notation on a five-line staff, starting with a treble clef and a common time signature. The notation consists of various note values and rests.

Handwritten musical notation on a five-line staff, continuing the piece with various note values and rests.

Handwritten musical notation on a five-line staff, featuring a series of eighth notes and rests.

Handwritten musical notation on a five-line staff, ending with a double bar line and repeat dots.



[Faint, illegible handwriting on ruled lines, possibly bleed-through from the reverse side of the page.]

Handwritten musical notation on a five-line staff, featuring a treble clef and a common time signature. The notation consists of a series of rhythmic notes and rests, with some notes beamed together. A fermata is placed over the final note of the staff.

Handwritten musical notation on a five-line staff, featuring a treble clef and a common time signature. The notation consists of a series of rhythmic notes and rests, with some notes beamed together. A fermata is placed over the final note of the staff.

Handwritten musical notation on a five-line staff, featuring a treble clef and a common time signature. The notation consists of a series of rhythmic notes and rests, with some notes beamed together. A fermata is placed over the final note of the staff.

Handwritten musical notation on a five-line staff, featuring a treble clef and a common time signature. The notation consists of a series of rhythmic notes and rests, with some notes beamed together. A fermata is placed over the final note of the staff.

Handwritten musical score on four staves. The notation includes various note values, rests, and clefs. The first staff begins with a treble clef and a common time signature. The second staff features a treble clef, a sharp sign (F#), and a '3' time signature. The third staff starts with a treble clef and a common time signature. The fourth staff begins with a treble clef and a common time signature. The notation is dense and characteristic of early printed music.

Handwritten musical notation on three staves. The first staff begins with a treble clef and a key signature of one flat (B-flat). The notation consists of rhythmic figures and notes, including a double bar line in the first measure of the first staff. The second and third staves continue the musical sequence with similar rhythmic patterns.

Handwritten musical notation on a single staff, continuing the piece. It features rhythmic figures and notes, ending with a double bar line.



C. 40 con antica numerazione stata, fin' una
guardia anteriore scritta. Sono bianche le
c. 17-19, 23-29, 36-38.

Ottobre 1918

R

